



▶ **MBS Item 713
Diabetes**
Page 4

▶ **Closing the Gap**
Page 6

▶ **Events and Training**
Page 6 & 7

Northern Pulse

E-News

Issue 49
17 March 2010
www.andgp.org.au

Adelaide Northern Division—New Building

After a very busy week we are finally settled at our new home (surrounded by boxes!).

We are now able to offer more comprehensive services to our GP members as well as the public through our range of programs.

The Division will be sending out invites to our official opening in the coming weeks as we welcome people to take a look around our new premises whilst taking the opportunity to promote our services to the community.

We are now located at 2 Peachey Road, Elizabeth West in the old Levis factory. The building is on the corner of Peachey Road and Winterslow Road, near St Patricks Technical College.

Our new contact details are as follows;

Adelaide Northern Division
of General Practice
2 Peachey Road,
Elizabeth West,
SA 5113

PO Box 421,
Elizabeth,
SA 5112



Phone - (08) 8209 0700



Fax - (08) 8252 9433



COPD Discharge Planning

The Adelaide Northern Division of General Practice is hosting an education session for practice nurses and general practitioners on Chronic Obstructive Pulmonary Disease (COPD) on Wednesday 24th of March. The session will be held in the dining room at Calvary Central Districts Private Hospital...

For full summary see Events and Training Page 9

A proud member of



Adelaide Northern Division of General Practice
2 Peachey Road, Elizabeth West, SA 5113 | PO Box 421 Elizabeth SA 5112
T 08 8209 0700 | F 08 8252 9433 | www.andgp.org.au | ABN 12 061 979 048

Delivering local health solutions through general practice

Immunisation Update

GPII Payments & Reports

Outcomes payment –

Paid to practices that achieve 90% or greater proportions of full immunisation providing the practice attains 10 WPEs (Whole Patient Equivalents).

These practices achieving 90% or greater immunisation coverage are paid \$3.50 per WPE of children seen at the practice providing they attain the 10 WPE's.

Payments are paid quarterly in February, May, August and November.

The reference period for each payment quarter is the 12 month period that ends four months before the start of the quarter in which the immunisation coverage is calculated.

The four month gap between the end of the reference period and the payment calculation allows time for consultations conducted within the reference period to be recorded in the Medicare system.



The table below shows the current reference periods for the payments made.

Payment Quarter	Reference period used for WPE calculation
February 2010	1 October 2008 - 30 September 2009
May 2010	1 January 2009 - 31 December 2009
August 2010	1 April 2009 - 31 March 2010
November 2010	1 July 2009- 30 June 2010

Notification payment of \$6.00 - if a completed age-based immunisation schedule has been sent to ACIR then they will get a notification payment – funded under the National Immunisation Program (NIP)

The **GPII020A Practice Report** is an important tool which may assist practices in improving their overall immunisation coverage rate.

Information in the GPII020A Practice Report is directly related to the practice Statement of Payment sent each quarter. The report identifies children assessed as being not fully immunised by Medicare number, name and address. It also identifies for each child the assessment status at the time of the quarterly calculation.

This assessment status may be different if additional information (which may have been missing at the time of the quarterly calculation) has been recorded on the Australian Childhood Immunisation Register (ACIR) in the period between the calculation and the generation of the GPII020A Practice Report.

The report provides practices with:

- The most current immunisation data recorded on the ACIR for each child listed as at the time of the report being generated
- identifies vaccines recorded on the ACIR after the calculation
- identifies vaccines required to be recorded on the ACIR in order for the child to be fully immunised
- can include single visits (practices requiring single visits to be included in their report should contact the GPII Enquiries line on 1800 246 101)

The provision of the most current data from the ACIR ensures practices do not waste time following up children where immunisation data missing at the time of the calculation has now been recorded on the ACIR.

A practice should review the GPII020A Practice Report as soon as it is received and forward any missing information to the ACIR promptly. Ideally, the information should be provided to the ACIR before the next quarter to ensure all additional vaccines are included in the re-calculation. If missing information is reported and processed by the ACIR prior to the recalculation, a practice's coverage rate may rise and benefit by an adjustment in the Outcomes Payment for that quarter.

This information can be accessed from the website: www.medicareaustralia.gov.au/provider/incentives/gpii/reporting.jsp

Immunisation Handbook Electronic Updates

The 9th Edition Australian Immunisation Handbook is being continuously updated online. To make sure you are up to date with the latest advice about immunization practice in Australia, register to receive free updates.

To register visit: www.immunise.health.gov.au/internet/immunise/publishing.nsf/Content/Handbook-subscribe.



Government of South Australia

SA Health

Anxiety and depression in end of life care



The Australian and New Zealand Society of Palliative Medicine invites medical practitioners to attend one of 7 forums on anxiety and depression in end of life care.

This session will cover psychological and pharmacological treatments of anxiety, assessment of mood disorder, the differential diagnosis of depressed mood and conservation-withdrawal syndrome, treatment options for depression 'near the end of life' and managing requests for physician assisted suicide in patients with depressive illness.

The program in each city will begin at 6:15pm with a light meal, followed by a presentation by a guest speaker and case study discussion.

City	Date	Speaker and topic	Venue
Adelaide	12 May 2010	Dr Sandy Macleod	Terrace Room Gairdner Pavilion Yeale GAR South Terrace & Peacock Adelaide
Perth	13 May 2010	Dr Sandy Macleod	Seminar Room 3 Westbury Australia Hackett Drive Crawley
Darwin	15 May 2010	Dr Sandy Macleod	Amy Johnson Room Darwin Airport Resort 1 Henry Wrigley Drive Darwin
Melbourne	17 May 2010	Professor Brian Kelly	Peter Mac Lectura Theatre Peter MacCallum Cancer Centre Crawley Place East Melbourne
Hobart	18 May 2010	Professor Brian Kelly	Edwardian Rooms 1 & 2 Clydesdale Lewis Sts North Hobart

Biographies of speakers

Sandy Macleod, MBChB, FRANZCP, FACHPM, is a psychiatrist and palliative medicine specialist in Christchurch, New Zealand. Since 1993 he has been the Medical Director of the Nurse Maude Hospice but has continued to work part-time in consultation-liaison psychiatry. He has published widely on delirium and the psychiatric aspects of palliative care. In 2007 he published "The Psychiatry of Palliative Medicine: the dying mind".

Brian Kelly, BMed PhD FRANZCP FACHPM, is Professor of Psychiatry, School of Medicine and Public Health, University of Newcastle. He is a Psychiatrist and Fellow of the Australasian Chapter of Palliative Medicine. He has a long standing research and clinical interest in psychiatric aspects of oncology and palliative care, including the psychiatric complications of cancer, studies of bereavement outcomes, and the doctor-patient relationship in palliative care. Prof Kelly is a member of the Editorial Board of Palliative and Supportive Care, participated in the Advisory Group for development of National Palliative Care Referral Guidelines, and has participated in the development of the Therapeutic Guidelines in Palliative Care. Clinical roles as consultation-liaison psychiatrist have including palliative care and psycho-oncology in metropolitan and regional settings.

For more information

For more information or to register: ANZSPM website: www.anzspm.org.au or email Karen Cooper: karen@anzspm.org.au

Women's Health

Pap Smear Awareness Week Sunday, 2 May – Saturday, 8 May 2010

SA Cervix Screening Program encourages organisations to promote the importance of women 18 - 70 years of age, participating in screening for the prevention of cervical cancer.

FREE colourful campaign display kits are available. Community Small Grants are available to assist with promotional activities.

Further information please visit www.cervixscreening.sa.gov.au

Northern Pap Smear Scholarships 2010

ANDGP in conjunction with SA Cervix Screening are giving local practice nurses the opportunity to become qualified and trained to take Pap smears in your general practice. The scholarship will subsidise the cost of the Pap Smear Provider course facilitated by Shine SA. Scholarships are open to RN's in general practice across the northern region. Preferences will be given to practices working in areas where the Division deems there is an unmet need.

If you have any enquiries, please contact Veronica Riviere at the Division on 8209 0700

MBS item 713 - Men and Women aged 40-49 years at high risk of Type 2 Diabetes

The Type 2 Diabetes Risk Evaluation – MBS item 713

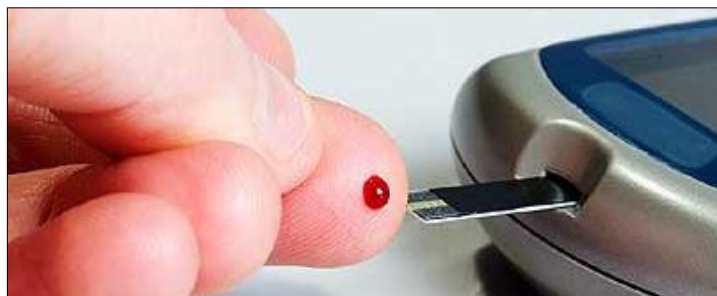
Why is a Diabetes Risk Evaluation important for this patient group?

- Diabetes is one of the largest contributors to the disease burden in Australia, and type 2 diabetes accounts for 92 per cent of diabetes cases in Australia.
- Diabetes is associated with a number of complications, including an increased risk of developing cardiovascular, eye and kidney disease. The incidence of type 2 diabetes has more than doubled in the last 15 years.
- The onset of type 2 diabetes is largely associated with lifestyle risk factors, particularly overweight and obesity, physical inactivity and poor diet.
- Type 2 diabetes can be prevented through lifestyle modification. International evidence has shown that intensive lifestyle interventions in high risk patients can reduce the incidence of type 2 diabetes by up to 58%.
- Patients aged 40 to 49 years of age who are at **high risk** of type 2 diabetes using the AUSDRISK tool. **Patients with newly diagnosed or existing diabetes are not eligible for item 713.**

What does an item 713 involve?

- Evaluation of a 'high' risk score on the AUSDRISK (15 or over) , including assessment of the risk factors contributing to the score.
- Assessing the readiness of the patient to make lifestyle changes to address the risk factors
- Updating the patient history and undertaking examinations and investigations
- Making relevant referrals and identifying appropriate follow-up
- Providing information and advice, such as referral to an accredited, subsidised LMP or the use of the Lifescrpts resources.

Practice Nurses, Aboriginal Health Workers and other health professionals may assist GP's in performing an item 713.



Measuring a patient's risk

- A patient's risk of diabetes must be determined using the AUSDRISK screening tool within a 3 month period prior to item 713.
- The AUSDRISK assesses a patient's risk of developing diabetes in the next 5 years.
- This AUSDRISK can be completed by the patient or with the assistance of practice staff.
- Patients who score 'high' on the AUSDRISK and who have had diabetes excluded, are eligible to be referred to a subsidised LMP.

Item Number	Patient Eligibility	Frequency
713	Patient is aged 40-49 with a high risk of developing Type II Diabetes as determined by the AUSDRISK tool	Once per 3 years
Related Item Numbers		
717	Men and women aged between 45-49 (inclusive) with at least one risk factor for chronic disease developing a chronic disease	Once only
710	Patient is of Aboriginal or Torres Strait Islander origin aged 15-54	Once per 18 months

Lifestyle Modification Program (LMPs)

Patients who are at **high risk** of type 2 diabetes based on the AUSDRISK tool, can be referred to LMPs under an item 713 (type 2 diabetes risk review), item 717 (45-49 year old health check) or item 710 (Indigenous Adult 15-54 year old health check)

LMPs are typically a series of group education and motivation sessions supporting lifestyle change. LMPs provide information in accordance with national standards. These standards require that information is provided on:

- The risk of diabetes and their relationship to lifestyle risk factors;
- The importance of regular diabetes screening;
- Nutrition advice and education;
- Physical activity advice;
- Behavioural strategies to support the adoption and maintenance of healthy lifestyle changes;
- Smoking cessation and alcohol reduction advice if required; and
- Information about community resources to provide support in maintaining lifestyle change.

LMPs need to be awarded accreditation before they can start delivering services.

GPs need to complete a GP referral Form for each patient referred to a LMP under an item 713, 717 or 710. The GP Referral Form can be downloaded from ANDGP website.

Other resources

- Adelaide Northern Division of General Practice can direct you to resources in your area and provide you with details of **Reset your life** - Accredited Lifestyle Modification Programs. www.andgp.org.au
- Copies of the AUSDRISK tool and GP Referral Form to reset your life can be downloaded from www.andgp.org.au or by contacting the division on 8209 0700
- The Lifescrpts resource kit can help identify lifestyle risk factors and implement early intervention strategies to modify behaviour. www.andgp.org.au
- Diabetes Australia provides a range of resources including national evidence based guidelines for the primary prevention of type 2 diabetes. www.diabetesaustralia.com.au.

The RACGP has a number of resources:

- *The Red Book* – Guidelines for preventative activities in general practice.
- *The Green Book* – Putting prevention into practice: guidelines for the implementation of prevention in the general practice setting.
- *The SNAP Guide* – Smoking, Nutrition, Alcohol and Physical Activity (SNAP): a population health guide to behavioural risk factors in general practice. www.racgp.org.au

Make your move!

An 8 week free physical activity program

Make Your Move offers information and guidance on fun physical activities, as well as tips on how to achieve a physically active lifestyle and improve your health. This program would benefit people with diabetes, gestational diabetes, arthritis, high blood pressure or cholesterol, or people doing pre-diabetes and healthy weight management

When Mondays : 19th April 2010 – 21st June 2010 : 12:30pm – 2:30pm

Where Morella Community House
90 Kings Road, Parafield Gardens

If you have any questions or would like to register, please call Leo on 8281 7644 or Jonathon on 0411 325 253.

For more information

Central Northern Adelaide Health Service
Salisbury Primary Health Care Services
Hollywood Blvd Salisbury Downs SA 5108



Closing the Gap

Welcome to the new Closing the Gap feature of the Northern Nurse.

I am the indigenous health project officer working on Closing the Gap. My previous project was Healthy Eating and Living in Salisbury project (HEAL).

Close the Gap is aimed at improving access to primary health care services for Aboriginal and Torres Strait Islander patients. These improvements will be achieved by promoting services to the Aboriginal and Torres Strait Islander community and supporting/motivating primary care services to provide more culturally appropriate services.

As a part of the project a Indigenous Outreach Worker, will be employed by the Division. This will happen soon after we relocate to our new premises in March.

Aboriginal? Torres Strait Islander? **Don't Guess—Do Ask**

Identification of Aboriginal and/or Torres Strait Islander patients is important. You may have Indigenous patients and not be aware of it. Did you know that:

- You can't tell if someone is of Aboriginal and Torres Strait Islander origin by looks alone
- It is **NOT** inappropriate to ask
- The **ONLY** sure way is to ask
- Self identification of Aboriginal and Torres Strait Islander origin is sufficient to

access relevant Medicare item numbers

An ideal way to identify your patients is to ask this question: 'Are you of Aboriginal or Torres Strait Islander origin?'

- No
 Yes, Aboriginal
 Yes, Torres Strait Islander (for persons of both Aboriginal and Torres Strait Islander origin, mark both 'yes' boxes)

Including this question on new patient registration forms, templates, when running clinics or during data cleaning is a good way to gather this important information.

Changes to Aboriginal and Torres Strait Islander Health Check Item Numbers:

The existing four Aboriginal and Torres Strait Islander people's health assessment items are going to be grouped into one health assessment item.

There will be no designated time or complexity requirements, and no distinction between an assessment provided in or out of consulting rooms. The length of the health assessment will be at the medical practitioner's discretion.

The health assessment item for services provided by a practice nurse or registered Aboriginal health worker on behalf of a medical practitioner will move to a new group (M12), and as a consequence will have a new

item number (10986).

The old item numbers, 704, 706, 708, and 710 will be replaced by the new item number 715, and will attract a fee of \$196.65.

These changes will be effective as of 1 May 2010.

These are additional to the introduction of the new **PIP indigenous SIP** which will also be introduced in May. Registration forms can be obtained by contacting Medicare.

Do you have an interest in Aboriginal Health or do you see many Aboriginal or Torres Strait Islander patients?

Would you like an opportunity to be involved with the Close the Gap program or have a say in how the program is designed at the Division?

Contact Fiona now!

Fiona Hill

Indigenous Health Project Officer

8209 0700

0431 007 771

fhill@andgp.org.au

Appetite For Change

Specialist nutrition and dietetics practice for eating disorders

Accepting appointments now.

Accredited practising dietitian, Gabriella Heruc has significant experience in treating disordered eating in both hospital and private practice settings.

With both a Master of Nutrition and Dietetics and an undergraduate Honours degree in Psychology, she is ideally trained to assist with dietetic counselling for these complex issues.

Gabriella is a member of the Australian and New Zealand Academy for Eating Disorders and the Dietitians Association of Australia. She also has training in Maudsley Family Therapy, Acceptance and Commitment Therapy (ACT), Cognitive Behavioural Therapy for Eating Disorders, Paediatric Nutrition and Sports Nutrition.

Specialising in Treatment for:

- Anorexia Nervosa
- Bulimia Nervosa
- Eating Disorder Not otherwise specified
- Binge Eating Disorder
- Obesity-related Issues
- Athletes with Eating Disorders

Address:
Suite 18, 50 Hutt Street
Adelaide SA 5000

Appointments:

Gabriella Heruc
M. 0411 770 111
E. appetiteforchange@gmail.com
W. appetiteforchange.com.au

GP referrals for Medicare rebates accepted.
Registered with private health insurance providers.



Mock Clinical Exams

Half day workshops in 2010

The RACGP SA&NT Faculty will present half day mock clinical exam workshops. These are complementary to the pre-examination course (PEC) designed for international medical graduates (IMGs) who are preparing to undertake the Fellowship of the RACGP (FRACGP) or Australian Medical Council (AMC) examination to become a recognised medical practitioner in Australia.

4 June or 3 September, 1.00 pm – 5.00 pm

Venue

Queen Elizabeth Hospital
28 Woodville Road
Woodville West, SA 5011

Aim of the workshop

The simulation will provide candidates with the opportunity to participate in a mock version of the clinical examination. Individual written feedback will be given to each candidate based on their performance.

Workshop outline

The mock clinical exam enables participants to gain an insight into the exam process and the standards required to pass the exam, and to experience controlled exam conditions through various cases and rotations while providing valuable practice.

[Click Here to download Flyer/Registration Form](#)



Are you planning on sitting your RACGP Fellowship exams?

Small Group learning for IMGs
Contact Amy: apaul@andgp.org.au

Applied Knowledge Test (AKT)	Saturday 06 Mar 2010 Or Saturday 21 Aug 2010
Key Feature Problems (KFP)	Saturday 06 Mar 2010 Or Saturday 21 Aug 2010
Objective Structured Clinical Examination (OSCE)	Saturday 08 May 2010 Or Sunday 24 Oct 2010
Practice Based Assessment (PBA)	Stream 1 Commences Feb 2010 Or Stream 2 Commences Jul 2010

New Resources



Urgent MHAGIC Product Update

On the 2nd of March Global made a prerelease of **MHAGIC4.15** available on their website.

They have discovered a problem with this release and are recalling it.

If you have installed MHAGIC 4.15 from the web site please contact the Global Health support desk as soon as possible on 03 9675 0600.

Chronic Disease Referral Pathways

These books are currently being distributed to all GP's and practice nurses within the Division.

Five referral pathways have been created:

- Diabetes Prevention and management
- Coronary Heart Disease Prevention and Management
- Respiratory Prevention and Management
- Musculoskeletal Prevention and Management
- Mature Aged Health and Wellbeing Management

[Click Here to view/Save](#)



Resource Kit for Aboriginal and Torres Strait Islander Medicare Health Checks

[Fact Sheet](#)

[Questions and Answers](#)

[Child Health Check proforma \(PDF 184 KB\)](#)

[Adult Health Check proforma \(PDF 182 KB\)](#)

[Older Person Health Check proforma \(PDF 183 KB\)](#)

[Follow-up Health Services for People of Aboriginal and Torres Strait Islander Descent](#)

You've Got What?

From DoHA, this book is a great resource for GPs and Practice Nurses GP's. For more information and to download for free please

[Click Here](#)

Has all the information about infectious diseases and how, why and what for treatment of these. Is a great resource!!!!



The Elephant in the Room

Adelaide Northern headspace and Centacare (Navigate Program) have teamed up to present a three-session program for **families and significant others** of young people aged 12-25 who may be experiencing a mental health problem.

The three sessions follow the theme "taking care of your young person, taking care of your family, and taking care of yourself". It will cover such topics as understanding mental health problems affecting young people, communication skills, and self-care. The program would be ideal for the families and significant others of young people aged 12-25.

Please circulate the attached flyer to interested clients [Click Here](#).



The Elephant in the Room

A free program for anyone responding to a young person (12-25) with a mental health problem.

Topics include:

- Getting help
- Response strategies
- Self care

Dates: Tuesday 16th, 23rd & 30th March

Time: 6-8 pm

Place: ANDGP, Elizabeth

For more information please contact Stacey Roy at the Division on 8252 9444



Title	Date, Time Venue	Topics, Objectives	Target Audience	RSVP
An update on the treatment of Alcoholic Hepatitis	Thursday 18th March Calvary Central Districts Registration & Dinner from 6.15 pm, Presentations commence at 7.00 pm sharp	Dr Edward Teo MBBS (Adel), FRACP	GPs Application has been made for Category 2 (2pph) points	Phone: 8282 5314 amcshane@calvarysa.com.au Click Here for Flyer/Registration Form
COPD Discharge Planning	Wednesday 24th March Calvary Central Districts 6pm-9pm	Robyn Cameron Clinical Practice Consultant, Respiratory Services (LMH) Nathan Ward Senior Physiotherapist, Pulmonary Rehab (LMH)	GPs Practice Nurses	Phone 8209 0700 Click Here for Flyer/Registration Form

COPD Discharge Planning

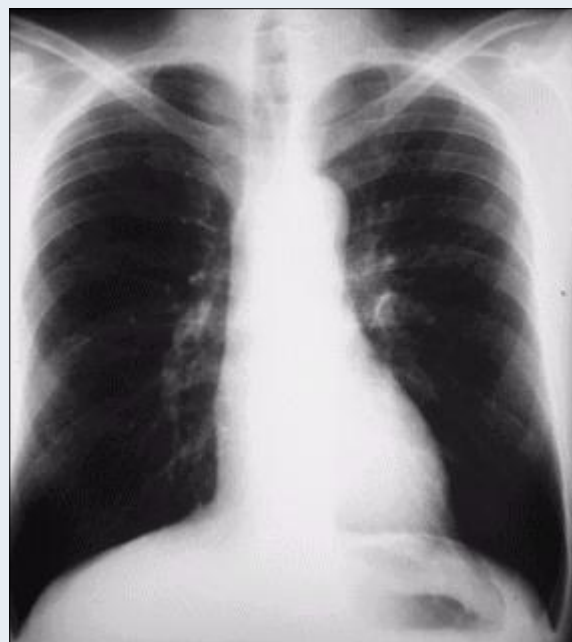
The Adelaide Northern Division of General Practice is hosting an education session for practice nurses and general practitioners on Chronic Obstructive Pulmonary Disease (COPD) on Wednesday 24th of March. The session will be held in the dining room at Calvary Central Districts Private Hospital.

There will be a light meal at 6pm followed by a presentation from Robyn Cameron, Clinical Nurse Consultant, Respiratory Chronic Disease, at Lyell McEwin Hospital. She will discuss differentiating between COPD and Asthma, developing a action plan and management plan for someone with COPD, how to facilitate the transition from hospital to home, and how to manage exacerbations of the disease in general practice.

Nathan Ward, the Senior Physiotherapist, Pulmonary Rehabilitation at LMHS will then discuss the LMHS Pulmonary Rehabilitation Program, its benefits, and how to refer to the program. There will also be a community representative from the support group Northern Windbags. They will highlight some of the benefits of belonging to a condition specific support group.

Bookings can be made by calling the Division on 8209 0700

[Click Here for Flyer/Registration Form](#)



RACGP Mental Health Skills Training

If you are yet to complete Mental Health Skills Training, RACGP will be running a session on 25th March.

The workshop will be delivered as a 6 hour active learning module format, with predisposing and reinforcing activities designed to maximise educational value and increase transference of knowledge and skills into practice behaviours.

The workshop will be interactive, with a focus on participant engagement and active learning, and has measurable learning objectives.

Completion of the entire workshop will attract 40 Category 1 points in the QA&CPD Program for the 2008–2010 triennium.

This workshop has been accredited by GPMHSC as mental health skills training and fulfils the requirements of Medicare to access MBS item 2710.

Click here for more information and to register www.andgp.org.au/eventsandtraining/RACGP-flyer-mentalskillstraining.pdf

1300 84 20 40 Title	Date, Time Venue	Topics, Objectives	Target Audience	RSVP
Clinical Emergency Management (Intermediate and Advanced)	Intermediate: Adelaide - Friday 30 April Advanced: Adelaide - Saturday 1 & Sunday 2 May	Please visit website for details of both intermediate and advanced courses www.racgp.org.au/cem	GPs Intermediate—40 Cat 1 QA&CPD points Advanced—80 Cat 1 QA&CPD points	www.racgp.org.au/cem 1800 284 732
Free Online Cancer Training—Cancer Australia	Various courses, visit www.epicc.org.au for more information	Various topics, visit www.epicc.org.au for more information	GPs and other	www.epicc.org.au
Aboriginal and Torres Strait Islander Mental Health Training	Wednesday April 28th - EDC, Milner Street, Hindmarsh Monday June 28th - Mawson Centre, 2 Main Street, Mawson Lakes	Teaches first aid skills for mental health crisis situations and the early stages of mental health problems.	Anyone	1300 84 20 40 Click Here for Flyer/Registration Form
Free Opioid Pharmacotherapies Prescriber Training Course	Sunday May 16th, 2010, 1.30 – 6.30 pm at Norwood and two ½ day Clinical Attachments	Opioid dependence and withdrawal/detoxification. Methadone, Buprenorphine and N+3+200 altrexone Management of opioid prescription for chronic pain.	GPs Clinical Attachment component—40 CAT 1 QA&CPD points Workshop component—9 CAT 2 QA&CPD points	Jane Scarborough: jane.scarborough@health.sa.gov.au or phone 8130 7500 to register
Cardiology Skills Training	6th, 13th and 20th May 2010 8:30am—12:30pm each week followed by a light lunch	Various cardiology skills and techniques	GPs 40 Cat 1 Cat 1 QA&CPD Points	Gemma Butler 81121100 or email gbutler@gpadelaide.org.au Click Here for Flyer/Registration Form

Cultural Competence Training—Migrant Resource Centre SA

For Non-Government Local Services and Community Support Groups in the Salisbury Local Government Area.
This is an opportunity for those working with new and emerging communities to update their knowledge and skills in communicating and servicing clients of refugee and migrant background.
More Information and Registration www.andgp.org.au/eventsandtraining/external/flyer-culturalcomptraining.pdf

Are you confident about your role in the National Bowel Cancer Screening Program?

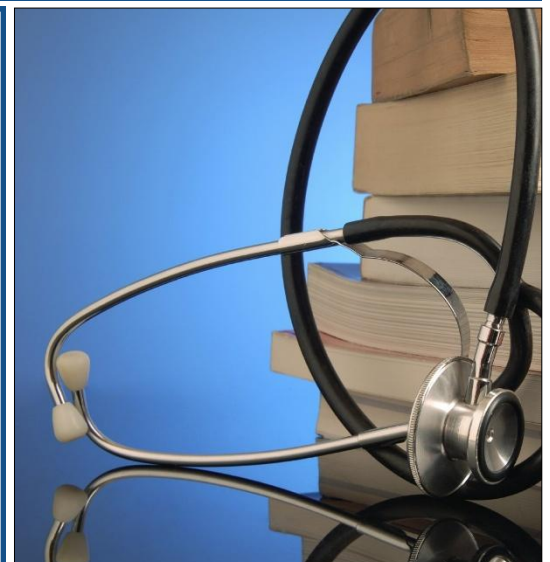
An easy on-line learning module can provide you with the answers, and is now available to RACGP members AND non-members. After logging in to the **RACGP glearning** website, simply type 'bowel' into the search criteria. Please note, non-members will need to click on 'FREE 30 day trial' and create a username and password first.

After completing the module, you will better understand:

- Your role as a GP in the Program.
- The duty of care linked to GPs.
- How to manage people eligible and ineligible for free screening
- How to complete the paperwork for the Program.
- Implementation of the Program in your practice.

Members will receive 2 RACGP QA&CPD points for completing the module

For more information, please contact the Bowel Cancer Education Coordinator at the Cancer Council WA on (08) 9388 4376 today.



General Practitioners

Martins Road Family Medical Practice

FT/PT GP required for busy, computerized, AGPAL accredited practice. VR preferred but not necessary. Have 19AB exemption and DWS approval. We are a growing medical practice with FT Practice Nurse and offer on site pathology, podiatry and psychology services.

Contact: Taryn 08 8283 4411 or 0420 853 471.

Craigmore Family Practice

Fully accredited, bulk billing practice requires full time doctor to work in a very busy 5 1/2 day practice. 9 doctors proactive doctors, 3 Practice Nurses, numerous Allied Health professionals, great staff and a very friendly environment. 75-80% of gross billings available to the right person.

Contact: Raelene 08 8255 1999
manager@craigmorefamilypractice.com.au

Lyell McEwin Hospital

Requires a GP with an interest in hip and knee specialisation to work 3-4 hours on a Friday afternoon.

Contact: Soorah 0402 973 301 or 8222 8147

Angle Vale Medical Centre

An opportunity exists for a new GP surgery at the Angle Vale Shopping Centre. Earmarked as one of the boom growth regions in our state, Angle Vale is already experiencing huge population growth as a result of development.

Contact: Rino Pancione, Centre Manager
0417 822 987

Europa Medical Centre

Busy accredited practice requires a full-time doctor VR/Non-VR. We are open 7 days a week and offer a modern environment to work in, we are computerised, have the latest equipment and the expertise of 3 practice nurses.

Contact: Karen Ames 08 8258 9103

Virginia Medical Centre

Seeking a part time or full time GP to work in a warm, friendly, fully computerised and Accredited practice.

Contact: Dr S R Nitchingham 08 8380 9145
virginiamed@internode.on.net

Vale Medical Group

Full-time VR GP required for well-established, accredited, bulk-billing practice at Elizabeth Vale. We have 19AB exemption approval so OTDs can apply.

Contact: Dr Nouman Iftikhar 08 8255 1178

Trinity Medical Centre

Seeking a Fulltime or Part time VR GP to join our busy Accredited practice.

Contact: Helen 08 8258 1677
trinitymc@internode.on.net

Salisbury Plain

Locum with view required for busy bulk billing practice. Fully electronic practice with two practice nurses and strong allied health team.

Contact: Dr Brian Symon on 08 8332 4077.

Northern Clinic

Looking for a GP on a full-time or part-time basis. We are fully accredited with a Practice Nurse and an Allied Health Team to be part of a dedicated and friendly team.

Contact: Dianne Engelhardt 08 8264 1322
deb@northernclinic.com.au

New Medical Centre

Opened 24/8/09. In North Eastern area near Walkley Heights. Max 25 minutes from GPO (even in peak hour traffic). Seeking Conscientious Caring General Practitioners as founding partners or associates. Non bulk Billing Practice.

Contact: Dr Bruno Rositano 0418 835 886 or 8265 2227 b.rositano@allcaremedical.com.au

Montague Farm Medical Centre

Requires a family practitioner to join our AGPAL accredited practice. We have an established and fully computerised practice. Flexible hours are available.

Contact: 0402 279 144, fax interest to 08 8359 4315 or email mfmcc@internode.on.net

Hyde and Partners

Hyde & Partners Medical Practice seek a full time/ part time VR GP to work in our busy accredited practice. Procedural skills highly desirable. Opportunity exists for both after hours, accident and emergency and inpatient participation.

Contact: Mark Foster 08 8523 0689
or 0412 768 575.

Health Matters Medical Centre

VR GP required for medium size medical centre. Fully accredited and computerised. Open 5.5 days. Friendly staff and modern consulting rooms. Practice nurse in attendance daily. Also incorporates other allied health professionals. Attractive remuneration. Hours are negotiable.

Contact: Dr Balendran 8285 8888.

Gawler Medical Clinic

GPs required for practice in Gawler. Modern purpose built surgery 45 minutes from Adelaide CBD. Best of town and country. Privately owned family practice fully computerised. Generous rates and conditions. Three positions vacant as assistants full or part time.

Contact: Dr John Salagaras 8522 1844
jsalagaras@gawlermedical.com

Evanston Park Surgery

New practice requires one full-time or part-time GP, VR or Non VR, with clinical, procedural and counselling skills, also experience in emergency medicine and computer literacy. Flexible hours. IMGs welcome. New premises, bulk-billing practice that is fully computerised. Supervision available. Hospital, accident and emergency work also available if interested.

Contact: 8522 4933.

Elizabeth Grove Surgery

Seeking part-time VR or NON-VR GP to join busy, bulk billing, computerised and accredited practice. We have a practice nurse, psychologist and audiologist. Practice established for 50 years and continues to have growing clientele. Open 6 days a week and can be flexible with hours. We pride ourselves on being a happy and supportive place to work. OTDs can apply and are also entitled to \$30,000 grant. 19A exemption. Work your own hours, any time, any day.

Contact: 8255 2133, jais2004@gmail.com

Elizabeth Centre Clinic

Seeking a GP to work full or part time hours. Warm, friendly practice, established for 25 years. Accredited with a practice nurse.

Contact: Dr Nicholson 0411 663 360

Blakeview Medical Centre

Requires part time or full time GP for our very busy practice. We service a growing area with new housing and areas being developed every day. We are a large medical centre with Physiotherapy, Podiatry, specialists, a practice nurse and pathology services on site.

Fully Accredited and computerised practice.

Contact: 8254 6888 or
allmunno@optusnet.com.au

All Health Medical Centre

VR or non VR female or male GPs, including overseas trained doctors, required for a large, busy medical centre in Paralowie Fully accredited and computerised practice. Friendly staff and modern consulting rooms. Excellent remuneration and conditions.

Contact: Maria 8250 1333 or 0421 573 307.

Allcare Medical Centre Gawler

Vacancy for full time or part time VR GPs to replace outgoing assistants. Excellent pay conditions in fully accredited practice with Practice Nurse. Local hospital inpatient, outpatient clinic and accident and emergency work available.

Contact: Kaye Klingner 08 8523 1880.

Adelaide Road Clinic

Seeking Full Time VR GP to work at our busy accredited practice in Gawler. We are a family orientated modern practice, fully computerised with latest equipment. Excellent remuneration and working conditions

Contact: Amber Parham 08 8522 1466
or ajp@adelaideroadclinic.com.au

Allied Health

Elizabeth Grove Surgery

We require a part-time physiotherapist, psychiatrist, audiologist, or any allied health service provider to join our busy, bulk billing, computerised and accredited practice. We are open six days a week, and can be flexible with hours. We pride ourselves on being a happy and supportive place to work.;

Contact: 8255 2133 or jais2004@gmail.com

Virginia Medical Centre

Dietician required for sessional work, to join a busy medical centre with three full time doctors. Computerised, modern and fully accredited practice. Friendly staff. We are open 6 days a week and session times may be negotiated.

Contact: 8380 9145 or
virginiamed@internode.on.net

Vale Medical Group

Dietician and physiotherapist required for sessional work to join busy, fully accredited, computerized and modern medical centre. Friendly staff, open 6 days per week. Session times may be negotiated.

Contact: Toni Jones on 8255 1178.

Practice Nurse

Allcare Medical Centre

Gawler East surgery is looking for a motivated friendly Registered Nurse 3 days per fortnight (sick and holiday relief) to support our team of Doctors. Fully Accredited and computerised, our practice is currently operating with Prac Soft and Medical Director. The successful candidate will be under the supervision of our Senior Registered Nurse. Experience in Practice Nursing preferable but not essential as training and support will be available.

Contact: Leanne or Karen on 85231880.

Salisbury Family Care

Registered nurse required for busy general practice.

Contact: Dr Symon on 8332 4077

Montague Farm Medical Centre

Registered Nurse required for 7 sessions split over 5 mornings and 2 afternoons. Preferably have previous experience in chronic disease management including GP Management Plans, Health Assessments etc.

Contact: prashiba@gmail.com or 0402 279 144.

Midway Medical Clinic

Elizabeth East medical practice requires a registered nurse for 2 days a week to undertake chronic disease management including GP Management Plans, Over 75 Home Health Assessments, Comprehensive Medical Assessments in aged care facilities, diabetic annual cycle of assessments.

Contact: Dierdre O'Doherty on 8255 2488.

Practice Staff

Salisbury Medical

We are looking for an experienced medical receptionist to join our busy fast paced practice. Must have knowledge of Medical Director and PracSoft. Experience in healthcare industry with a knowledge of the Medicare process. Applicant must have a professional presentation and a pleasant and caring manner. Working hours are part-time and may vary depending on workload.

Contact: Lhannaghan@salisburymedical.com.au

Montague Farm Medical Centre

Medical receptionist wanted. Casual position. Proven experience as a medical receptionist is essential and can work within a busy general practice. Exceptional communication skills and an understanding of medical practice billing and administration is a must.

Contact: 0402 279 144.

Advertisements are free for members of the Division.

To place an ad please email
egarner@andgp.org.au or phone (08) 8255 9444